



Instructions

Sportster Inspection Cover

NOTE

Re-use the stock retaining bolts & O-rings from your OEM inspection cover. Depending on condition, (Figure 1 item 2 & 4) O-rings may need to be replaced. Your new inspection cover has a specified orientation and should be installed with the thinner side up as noted by the arrow on back of the cover.

BQUAZY Sportster recommends installation be done by qualified individuals.

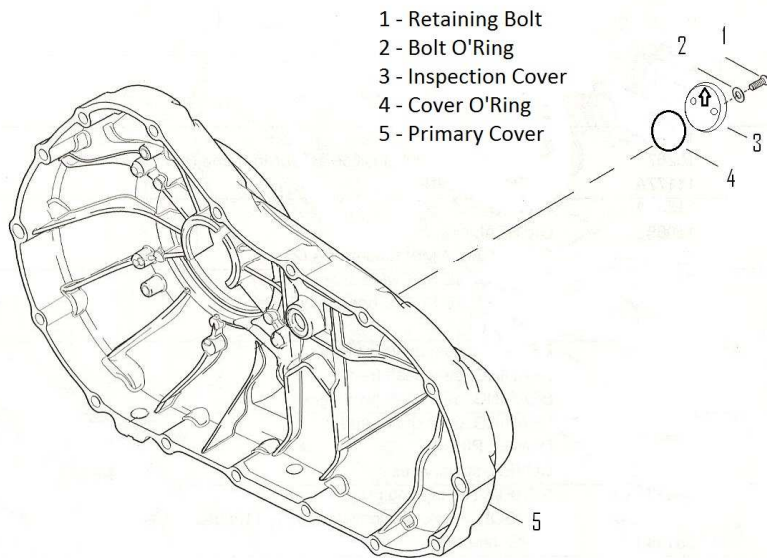
Models

These Kits are designed to fit 1994 to 2003 XL Sportster model motorcycles.

Kit Contents

1 - Inspection Cover

Figure 1.
Primary Inspection Cover



1. Remove stock inspection cover.
2. Inspect condition of O-rings for re-use (figure 1 item 2 & 4). If not able to re-use you will need to replace with Harley-Davidson part numbers 11171 & 11188.
3. Slip O-rings (figure 1 item 2) over retaining bolts.
4. Slip O-ring (figure 1 item 4) over inside groove of inspection cover and install on primary cover with thinner side up as shown by arrow on back side.
5. Tighten bolts with O-ring to secure inspection cover. We recommend using Blue Loctite® on the screws to help keep them secure.