



Instructions

Sportster Derby Cover Kit

NOTE

On models without forward controls, it will be necessary to remove the left footrest bracket for removal and replacement of the derby cover. Refer to Figure 2 on page 2.

BQUAZY Sportster recommends installation be done by qualified individuals.

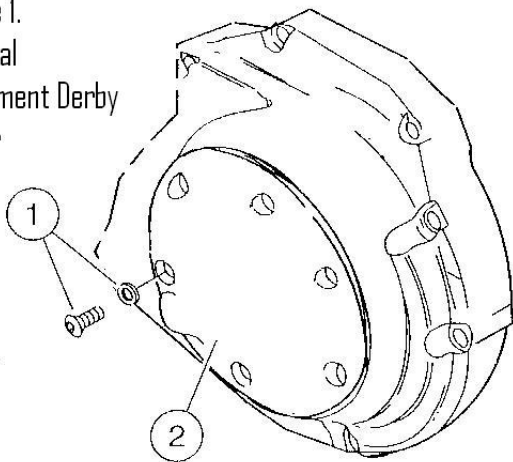
Models

These Kits are designed to fit 2004 and later XL Sportster model motorcycles.

Kit Contents

- 1 - Derby Cover
- 6 - Stainless Steel Socket Head Cap Screws

Figure 1.
Original
Equipment Derby
Cover

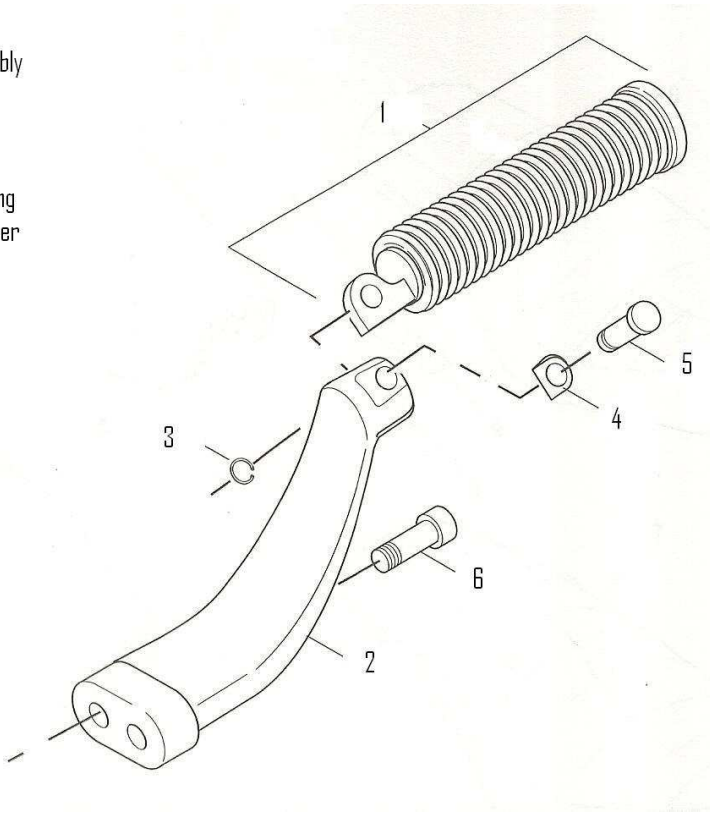


- 1. Buttonhead capscrew and washer
- 2. Cover

1. Remove the existing screws and washers that secure the clutch inspection (derby) cover. Remove the original cover. See Figure 1.
2. Inspect o-ring (Quad ring, see Figure 3 item #11 on page 2) for damage. If needed, replace with Harley-Davidson part number 25463-94.
3. Wipe groove on new cover, it must be clean of any excess oil or debris for proper seal.
4. Install the new cover and socket head cap screws. We recommend using Blue Loctite® on the screws to help keep them secure. Tighten screws in a crosswise pattern to 84-108 **in-lbs.** (9.5-12.2 Nm)

Figure 2.
Footrest Assembly

- 1 - Footrest
- 2 - Bracket
- 3 - Retaining Ring
- 4 - Spring Washer
- 5 - Clevis Pin
- 6 - Screw

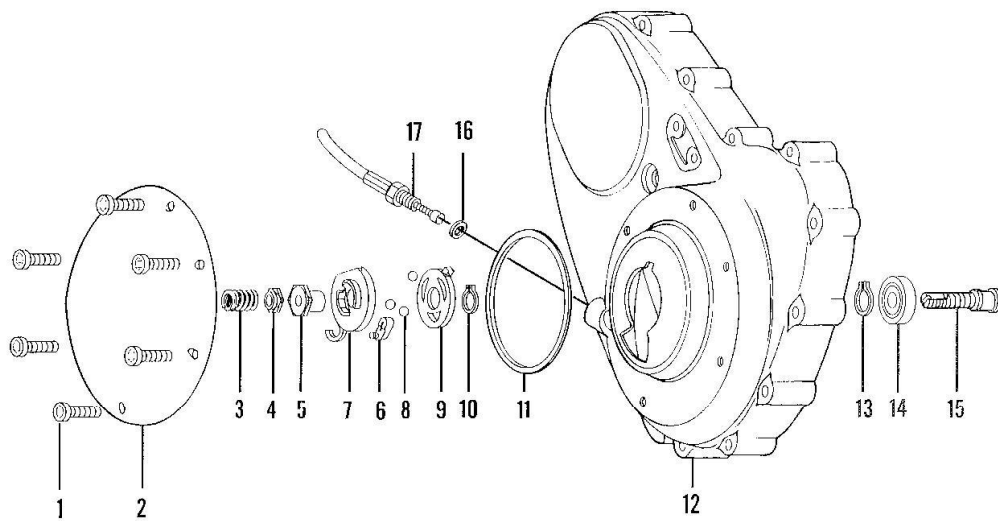


To install a new derby cover you will need to first remove the left Footrest Bracket. Remove the two screws (Figure 1 item 6) on the bracket.

After installing the new derby cover replace footrest bracket. Tighten the screws to 45-50 **ft-lb** (62-68 Nm) We recommend using Blue Loctite® on the screws to prevent loosening.

Figure 3.

PRIMARY DRIVE COVER



- | | |
|----------------------------|--------------------|
| 1. Torx screw and washer | 10. Snap ring |
| 2. Clutch inspection cover | 11. Quad ring |
| 3. Spring | 12. Cover |
| 4. Lockplate | 13. Snap ring |
| 3. Spring | 14. Bearing |
| 4. Lockplate | 15. Adjuster screw |
| 5. Well nut | 16. O-ring |
| 6. Coupling | 17. Clutch cable |
| 7. Outer ramp | |
| 8. Balls (3) | |
| 9. Inner ramp | |