



Instructions

Carburetor Cover

NOTE

BQUAZY recommends installation be done by qualified individuals.

Models

This Kit is designed to fit :

1988 to 2006 XL Sportsters

1990 to 2006 Evolution 1340 equipped

1999 to 2006 Twin Cam with CV Carburetor

This does NOT fit fuel injected models.

Kit Contents

1 - Carburetor Cover

4 - M4 Stainless Steel Screws

4 - Flat Washers

4 - Lock Washers

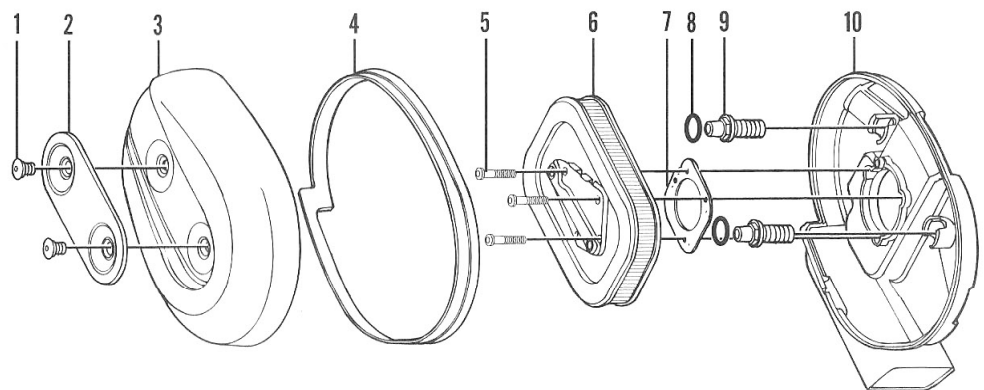


In order to gain access to the carburetor cover, you may need to remove the air filter assembly. See Figure 1.

1. Remove trim panel screws. See Figure 1.
2. Depending upon your model, you may also need to remove the backplate.
3. When re-assembling, we recommend using Blue Loctite® on the Breather bolts (Figure 1 Item 9) to help keep them secure.

AIR FILTER

Figure 1

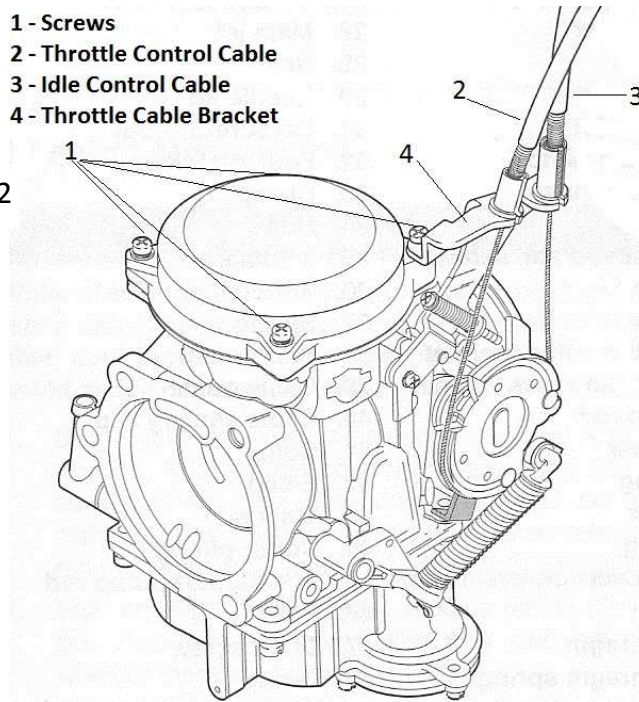


1. Screw
2. Trim panel
3. Cover
4. Seal ring
5. Retaining screw
6. Air filter element
7. Gasket
8. O-ring
9. Breather bolt
10. Backplate

1. Remove the four screws holding the carburetor cover. This includes the Throttle Cable Bracket screw. See Figure 2, item 1.
2. The underside of the cover will have two locating pins that nest into the carburetor base. See Figure 3, item 1. To have enough clearance for the locating pins, you may need to loosen but not remove the screw holding the Throttle Cable Bracket in order to remove the cover. See Figure 4, item 9.
3. Carefully remove old cover.
4. Before installing new cover make sure spring is in place on the Spring Seat. See Figure 4, item 6. To prevent scratching during installation you may want to place a protective wrap on the top of your cover.
5. Place a lock washer then flat washer over each of the four screws that were supplied with this kit and set aside. See Figure 4, items 1, 2 & 3 for the correct order of assembly.
6. Place the new cover on top of the spring, aligning the spring guide inside of the spring. Figure 3, item 2.
7. Align the four screw holes of the cover to the carburetor base. We recommend NOT placing a locating pin in the same location that the Throttle Cable Bracket will be. Place screws with washers in holes and tighten. Remember to tighten Throttle Cable Bracket screw if loosened.
8. Replace the Air Cleaner Assembly if removed. We recommend using Blue Loctite® on the Breather Bolts to secure the backplate to the bike. Figure 1, item 9.



Figure 2



1 - Locating Pins
2 - Spring Guide

Figure 3

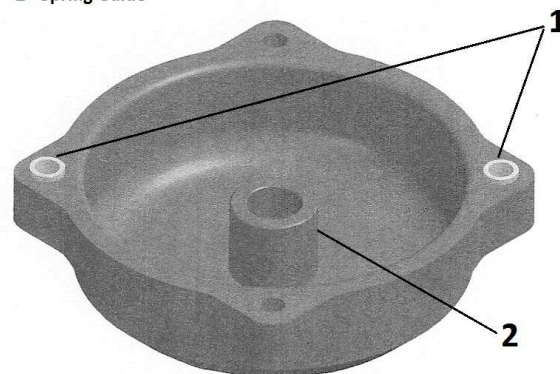


Figure 4

