



# Instructions

## Heel Toe Shifter

### NOTE

*BQUAZY Sportster recommends installation be done by qualified individuals.*

*We also recommend using Blue Loctite® on Screws or bolts to prevent loosening.*

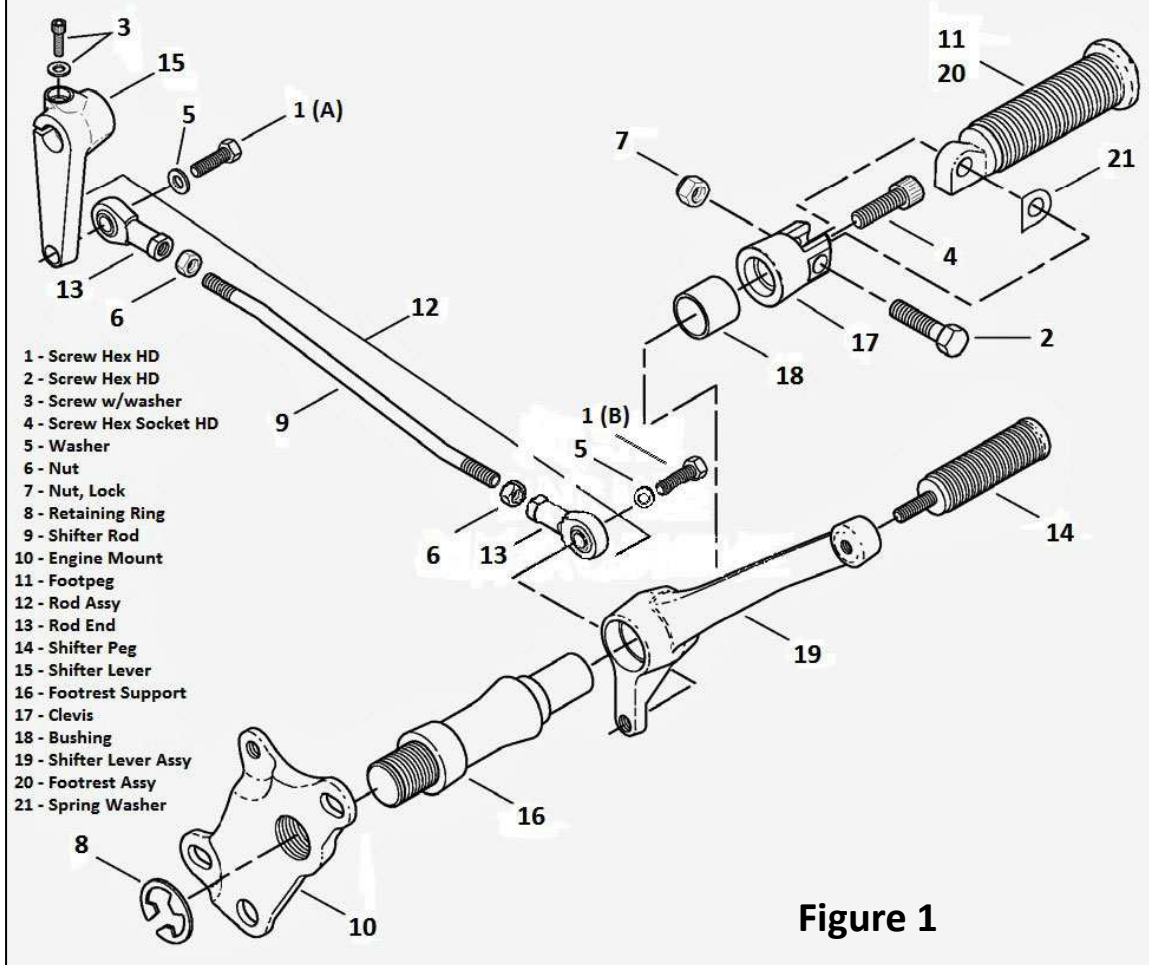
### Models

This Kit is designed to fit 1991 to 2003 Sportster model motorcycles with OEM forward controls. Or any model using H-D OEM part # 42582-99 shift lever.

This shifter lever will bolt on using the existing OEM hardware.

### Kit Contents

1 - Heel Toe shift lever including white bushing



**Figure 1**

Refer to Figure 1 for removal of the Standard Shift Lever (item 19).

1. Loosen but do **NOT** remove both Nuts (items 6) on the Shifter Rod (item 9) on both ends.
2. Remove only the Linkage Screw (item 1 B) securing the Rod End (item 13) to the Shift Lever Assembly (item 19). You do not need to remove the Linkage Screw (item 1 A) attached to the Shifter Lever (item 15).
3. Remove the Foot Peg (item 11) by removing the Lock Nut (item 7) from the Screw (item 2).
4. Remove the Clevis (item 17) by removing the Socket Head Screw (item 4).
5. The Shift Lever Assembly (item 19) should slide off the Footrest Support (item 16) along with the Bearing (item 18).

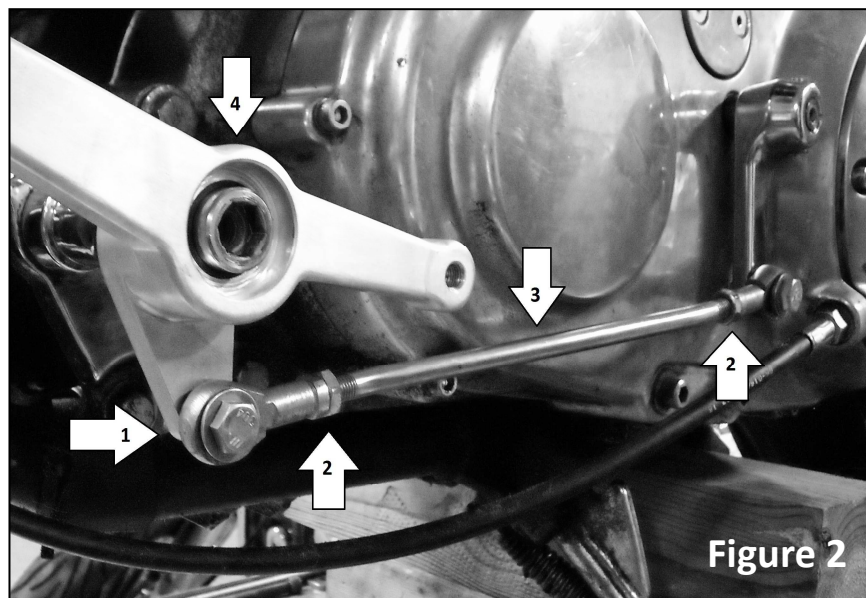


Figure 2

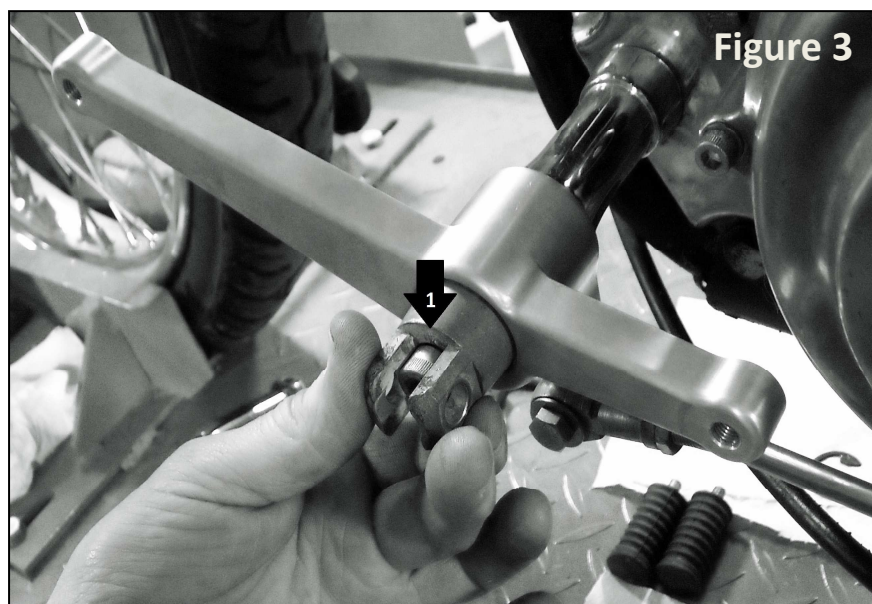


Figure 3

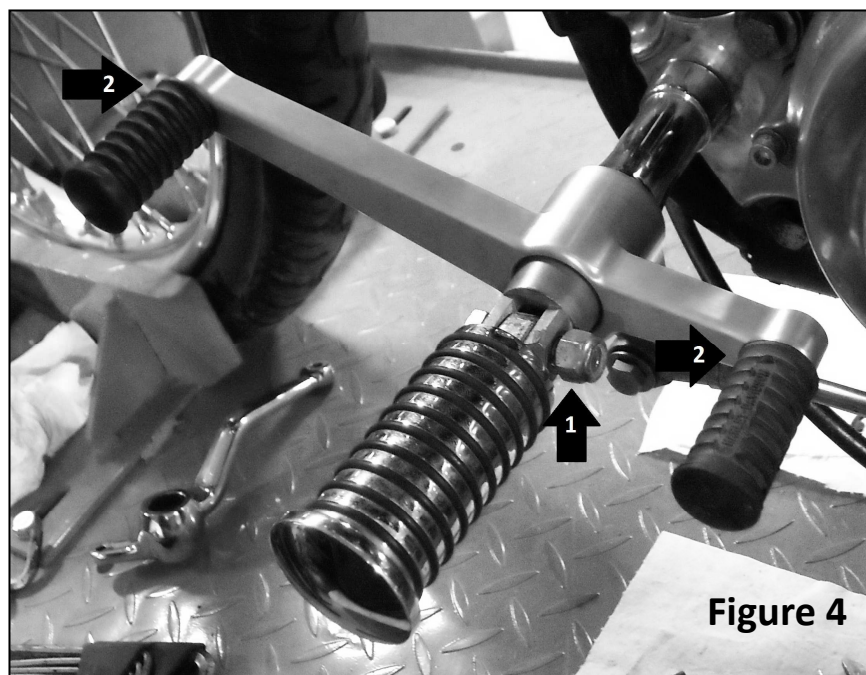


Figure 4

1. We recommend that you do a test fit to make sure the placement of the lever is in the desired location before doing a final install. When you are satisfied with the location use **Blue Loctite®** on the noted screws in section 3 and 5 to prevent loosening during operation.
2. Slide the new shift lever in place over the Foot-rest Support (Figure 2 item 4). Then insert the Linkage Screw (Figure 2 item 1) into the lever. This should be in the same location of the original lever that was removed.
3. You can adjust the toe and heel height if desired. This is done when you change the length of the Shift Linkage Rod (Figure 2 item 3) by rotating the Rod Ends (Figure 2 item 2). To do so you will need to remove the Linkage Screw first (Figure 2 item 1) then rotate one or both ends. Notice that the Shift Linkage Rod is not straight but has factory bends on either end. Be sure that the Shift Linkage Rod does not interfere with the movement of the heel portion of the lever. After final test fit then use **Blue Loctite®** on the Linkage Screw (Figure 2 item 1) to help prevent it from loosening during operation.
4. Once the Linkage Screw (Figure 2 item 1) is in place make sure to tighten the Lock Nuts. (Figure 2 items 2)
5. Insert the Clevis and Hex Head Screw (Figure 3 item 1) rotating to the location you prefer for your foot peg and tighten. After final test fit , be sure to use **Blue Loctite®** on the Hex Head Screw to help prevent it from loosening.
6. Install the foot peg you removed making sure to insert the Spring Washer (Pg. 1 Figure 1 item 21) and tighten the Lock Nut (Figure 4 item 1).
7. Install shifter pegs per manufacturers instructions (Figure 4 item 2).
8. **Once all is test fit and you are satisfied with the location make sure to tighten and secure all screws and nuts. It is very important to use **Blue Loctite®** on noted screws for your safety during operation.**